

Plat was filed for record in Plat BK 14 Pg 30, Martin County, Florida, Public Records this day of April 1997.

FILED 01231714

GENERAL NOTES

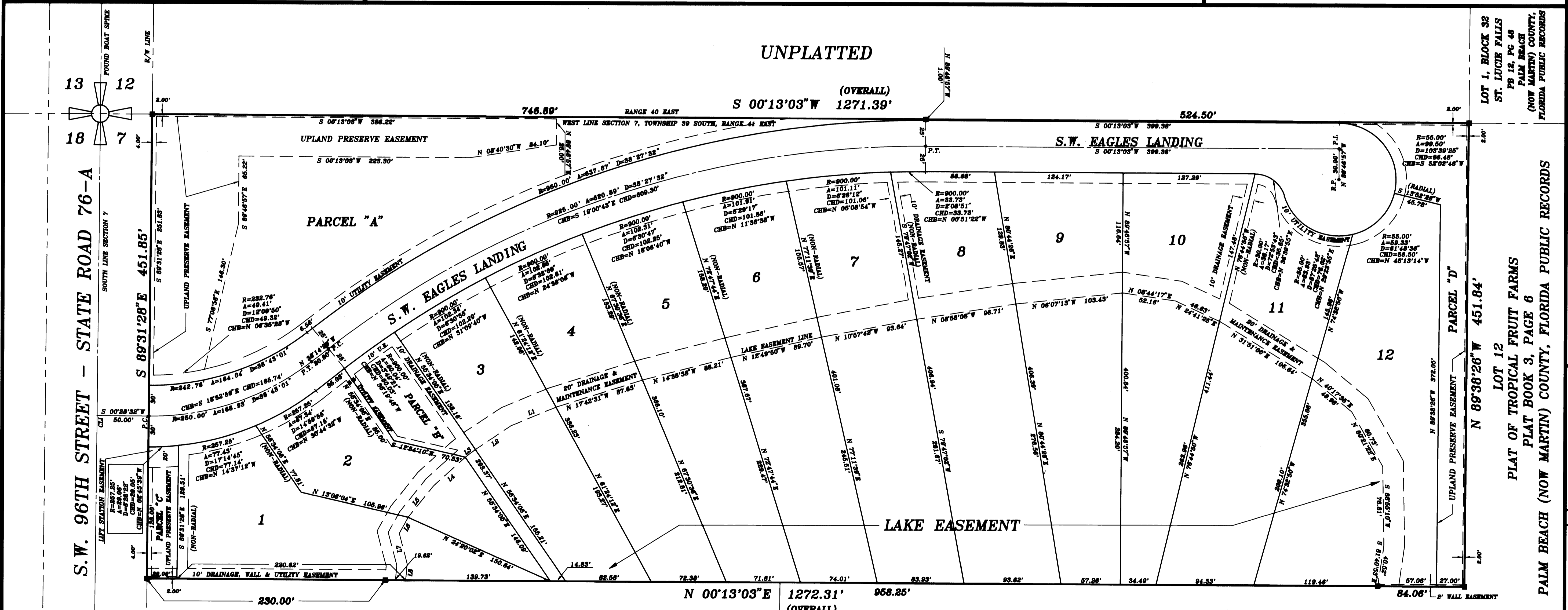
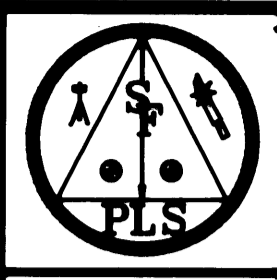
1. THERE MAY BE ADDITIONAL RESTRICTIONS THAT ARE NOT RECORDED ON THIS PLAT THAT MAY BE FOUND IN THE PUBLIC RECORDS OF THIS COUNTY.
2. A SEARCH OF THE PUBLIC RECORDS HAS NOT BEEN MADE BY THIS OFFICE.
3. BEARINGS SHOWN HEREON ARE ASSUMED ON THE CENTERLINE OF STATE ROAD 76-A AND ALL BEARINGS ARE RELATIVE THERETO.
4. THERE SHALL BE NO BUILDING OR ANY OTHER KIND OF CONSTRUCTION OR TREES OR SHRUBS PLACED ON DRAINAGE EASEMENTS.
5. THERE SHALL BE NO BUILDING OR ANY PERMANENT STRUCTURES PLACED ON UTILITY EASEMENTS.
6. PROPERTY LIES IN FLOOD ZONES "B", AS SHOWN ON FEMA/FIRM MAP NUMBERS 120161 0285 B PRINTED 8/15/81.
7. THIS PLAT, AS RECORDED IN ITS ORIGINAL FORM IN THE PUBLIC RECORDS, IS THE OFFICIAL DEPICTION OF THE SUBDIVIDED LANDS DESCRIBED HEREON AND WILL IN NO CIRCUMSTANCES BE SUPPLANTED IN AUTHORITY BY ANY OTHER FORM OF THE PLAT, WHETHER GRAPHIC OR DIGITAL.

EAGLES LANDING

BEING A REPLAT OF A PORTION OF LOT 13,
SECTION 7, TOWNSHIP 39 SOUTH, RANGE 41 EAST,
PLAT OF TROPICAL FRUIT FARMS, PLAT BOOK 3, PAGE 6,
PALM BEACH (NOW MARTIN) COUNTY, FLORIDA

LEGEND

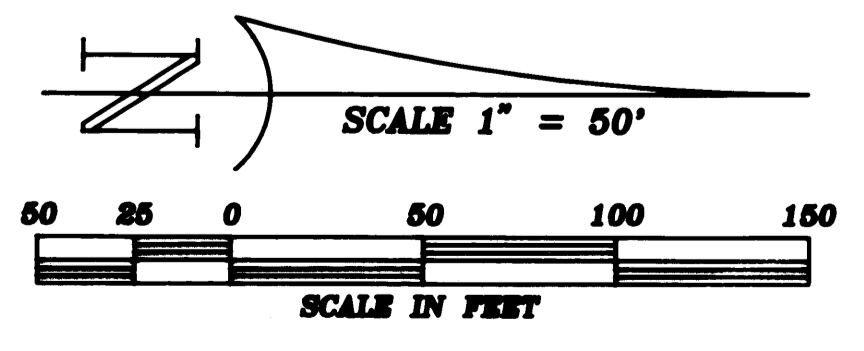
- A = ARC
- CHB = CHORD BEARING
- CHD = CHORD
- CLI = CENTERLINE INTERSECTION
- = DENOTES SET PERMANENT REFERENCE MONUMENT (P.L.S. NO. 4557)
- = DENOTES SET PERMANENT CONTROL POINT (P.L.S. NO. 4557)
- D = DELTA
- D.M.E. = DRAINAGE & MAINTENANCE EASEMENTS
- P.C. = POINT OF CURVATURE
- P.C.C. = POINT OF COMPOUND CURVATURE
- P.I. = POINT OF INTERSECTION
- P.R.C. = POINT OF REVERSE CURVATURE
- P.T. = POINT OF TANGENCY
- R = RADIUS
- R.P. = RADIUS POINT
- U.E. = UTILITY EASEMENT
- U.P.E. = UPLAND PRESERVE EASEMENT



LINE TABLE

No.	BEARING	DISTANCE
L1	N 22°49'42" W	47.07'
L2	N 33°50'41" W	41.48'
L3	N 37°39'28" W	12.22'
L4	N 42°22'17" W	41.48'
L5	N 51°28'27" W	38.86'
L6	N 61°28'44" W	18.19'
L7	S 76°23'49" W	31.03'
L8	N 84°47'10" W	15.88'

CRYSTAL LAKE ELEMENTARY SCHOOL
NORTH 1/2 LOT 13
PLAT OF TROPICAL FRUIT FARMS
PLAT BOOK 3, PAGE 6
PALM BEACH (NOW MARTIN) COUNTY, FLORIDA PUBLIC RECORDS



LOT 1, BLOCK 32
ST. LUCIE FALLS
PL 12, PG 48
PALM BEACH
(NOW MARTIN) COUNTY,
FLORIDA PUBLIC RECORDS

LOT 12
PLAT OF TROPICAL FRUIT FARMS
PLAT BOOK 3, PAGE 6
PALM BEACH (NOW MARTIN) COUNTY, FLORIDA PUBLIC RECORDS

SOUTH FLORIDA
PROFESSIONAL LAND SURVEYORS
2434 N.E. MYRTLE STREET - SUITE 1000 JENSEN BEACH, FLORIDA 34957
(407) 334-8772 (407) 334-2555 FAX (407) 334-2584

REVISIONS	DATE	BY
1	10/7/96	
2		
3		
4		
5		

JOB NUMBER
94-250

SHEET
2
OF
2